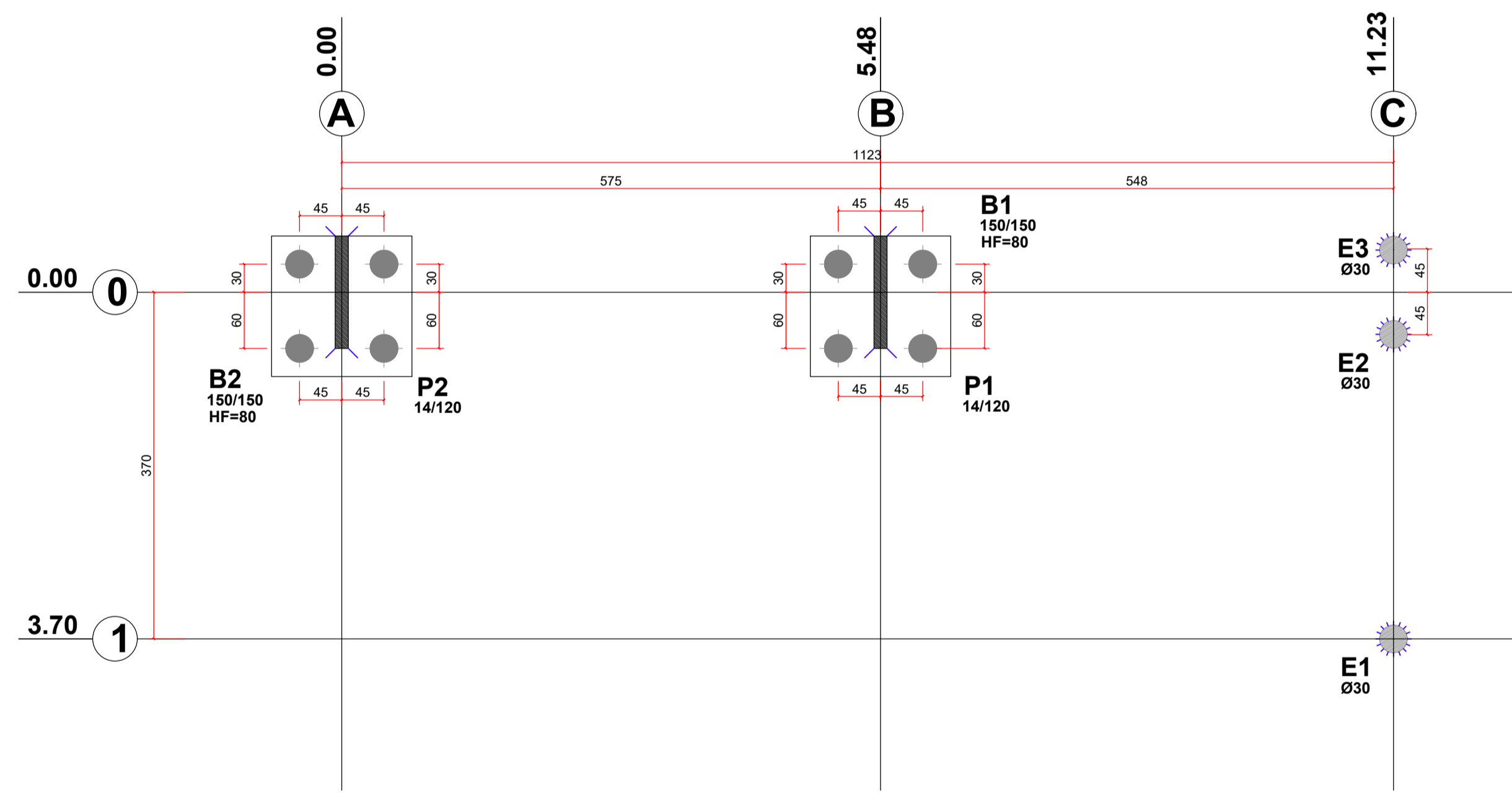


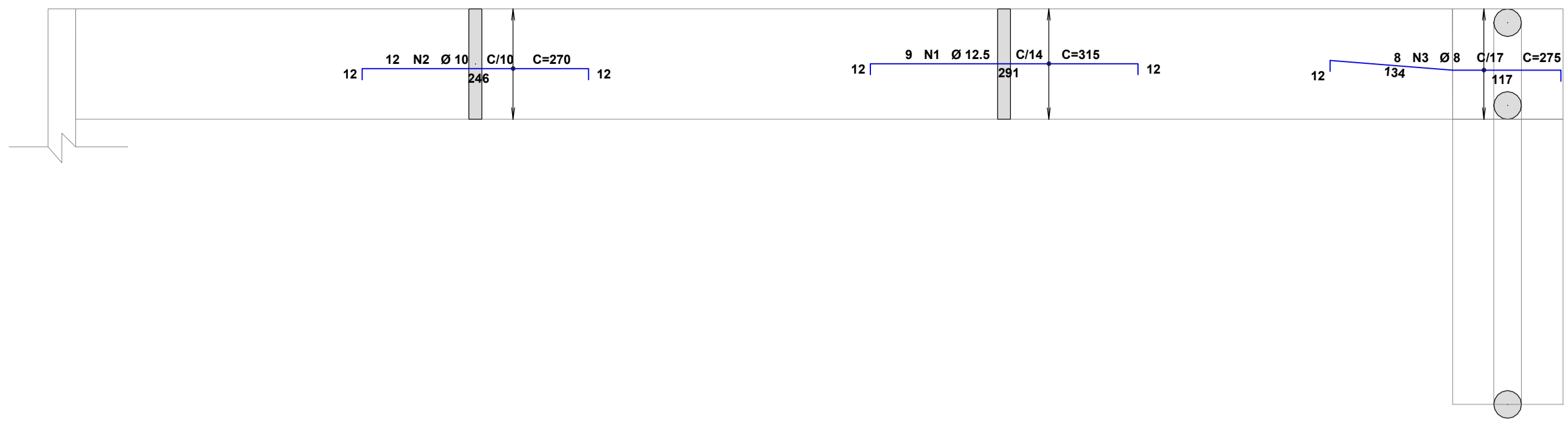
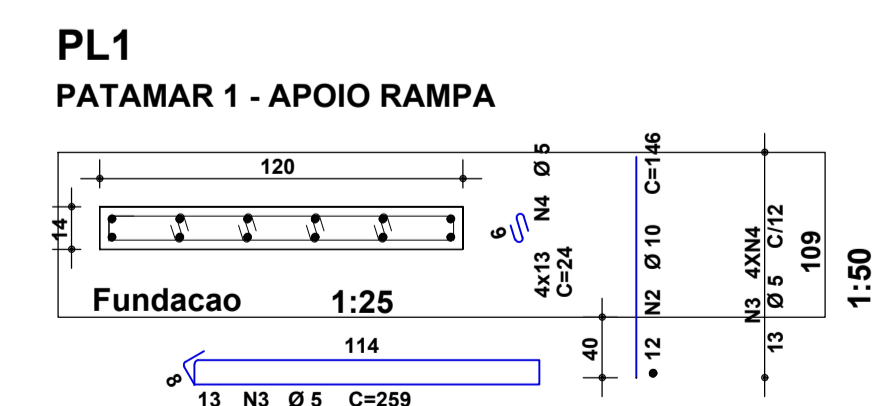
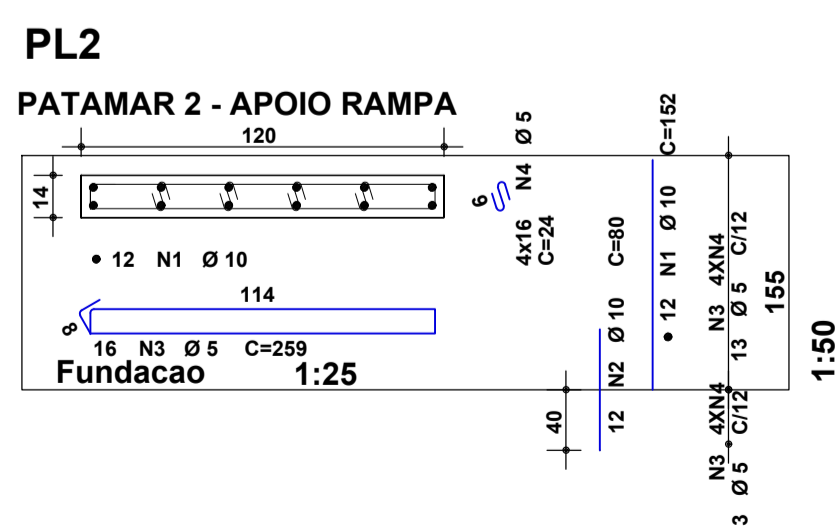
Planta de Fôrmas Rampa 1
ESCALA 1:50

NÍVEL: Rampa Inclinada +0.20 até +0.45 +0.45 Rampa Inclinada +0.45 até +1.20

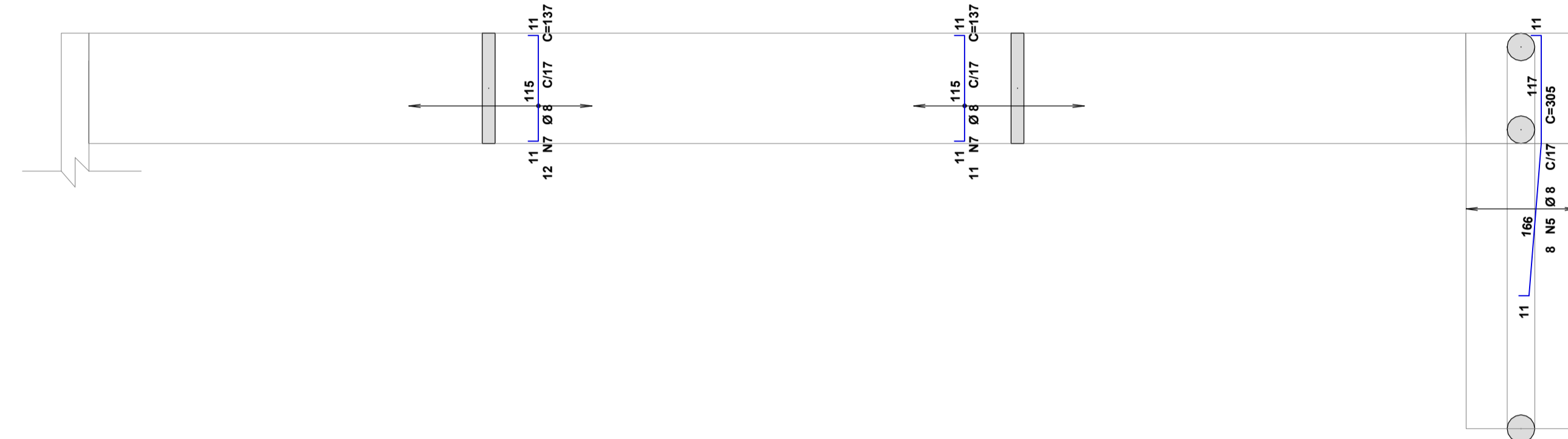


Locação Fundação
ESCALA 1:50

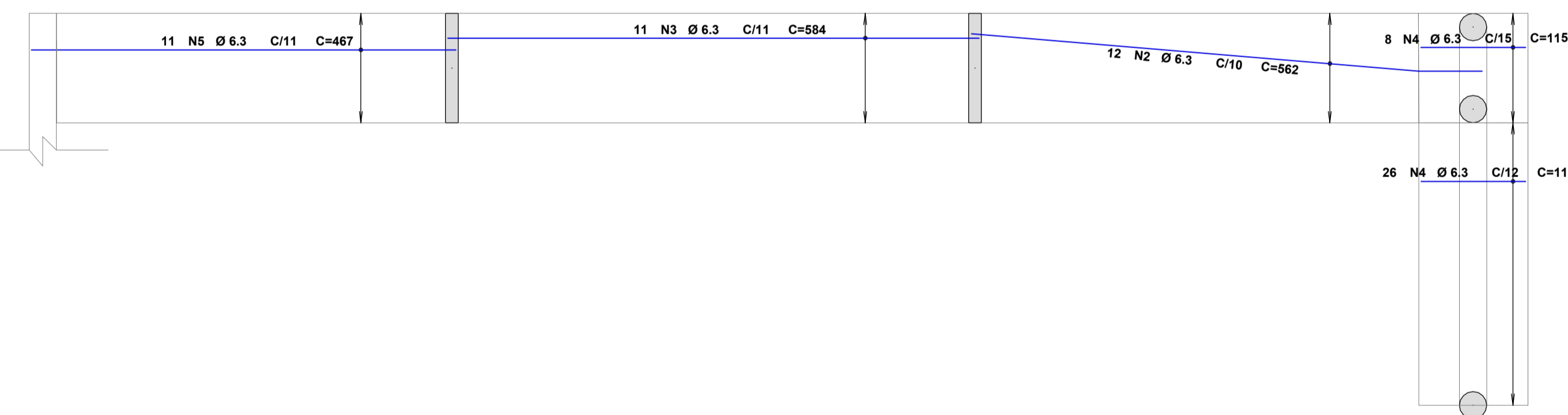
● Estaca Ø30 cm - Profundidade = 4.0 m



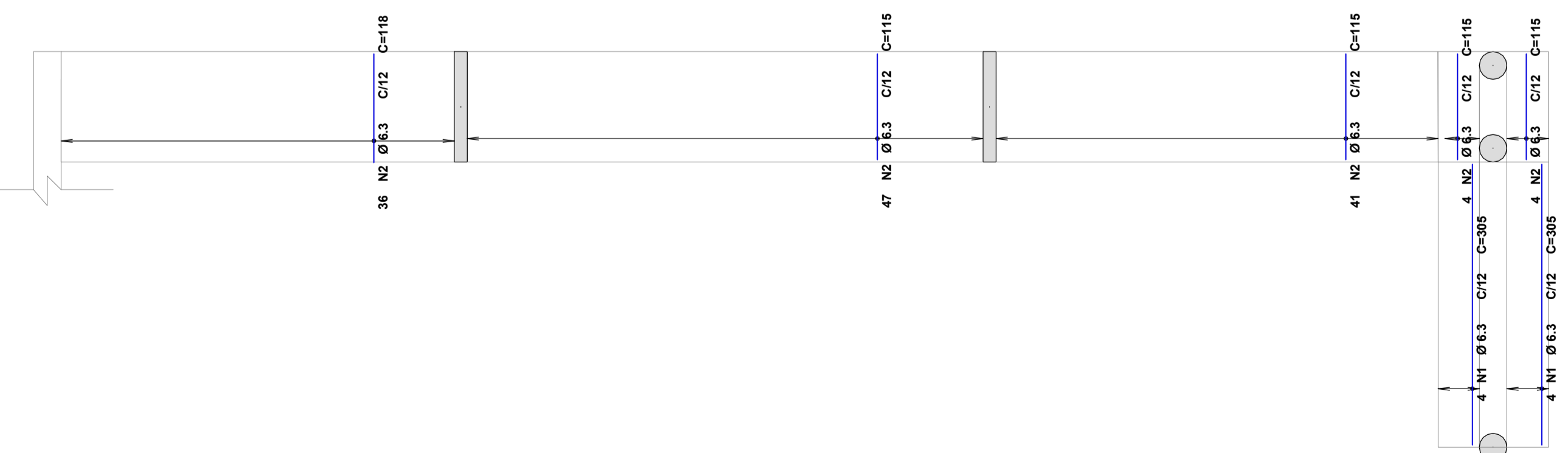
Armadura negativa horizontal - rampa 1
ESCALA 1:50



Armadura negativa vertical - rampa 1
ESCALA 1:50

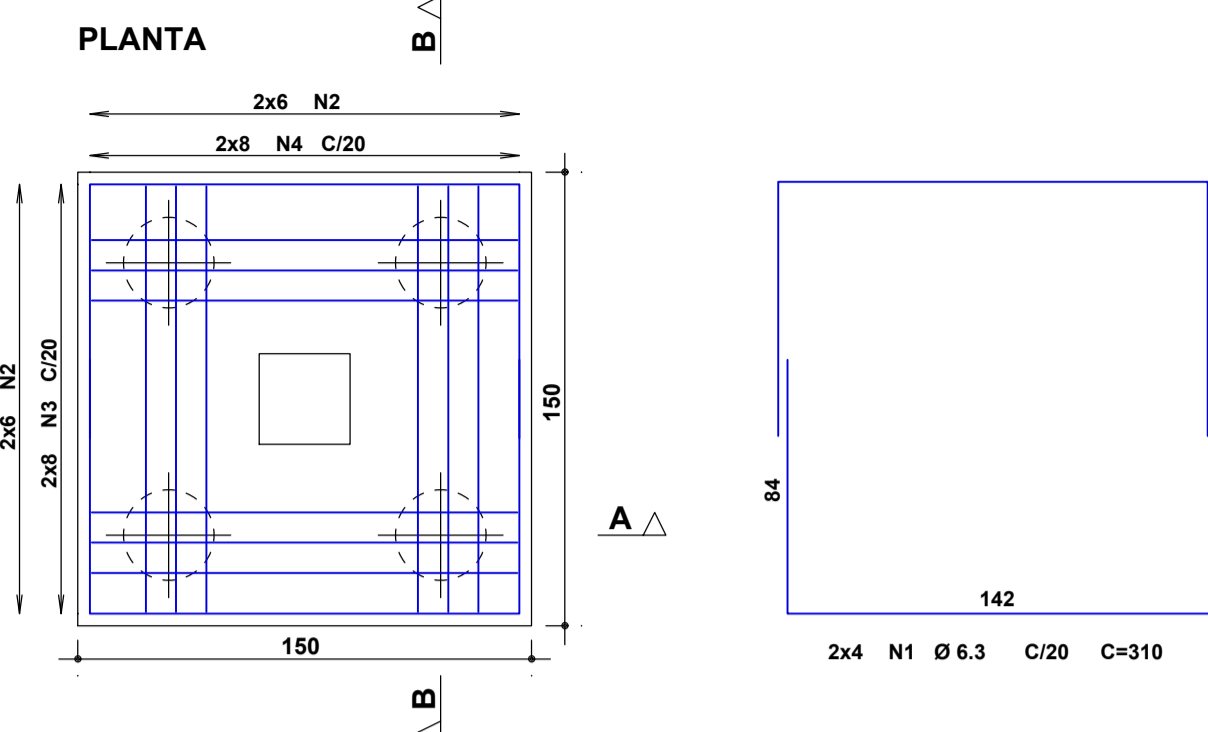


Armadura positiva horizontal - rampa 1
ESCALA 1:50

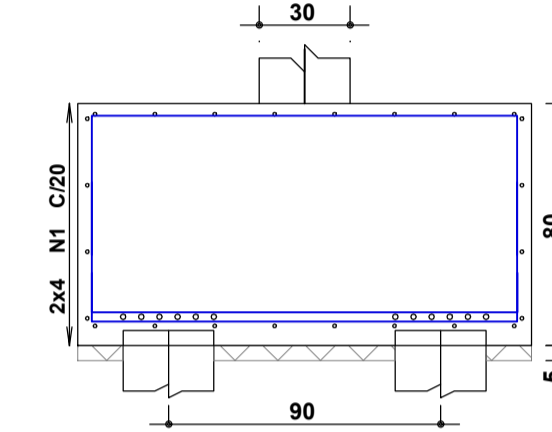


Armadura positiva vertical - rampa 1
ESCALA 1:50

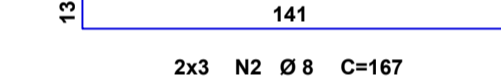
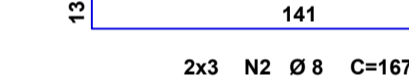
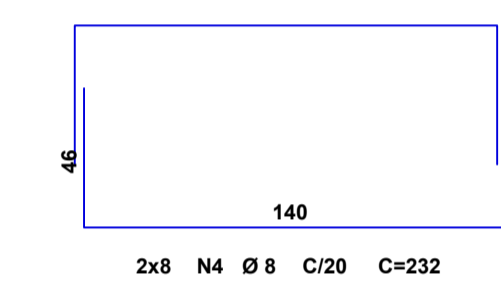
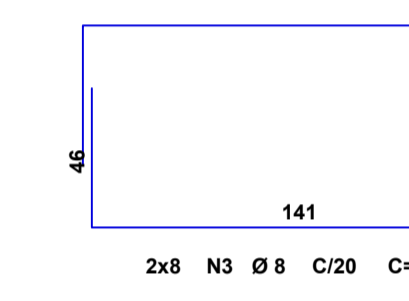
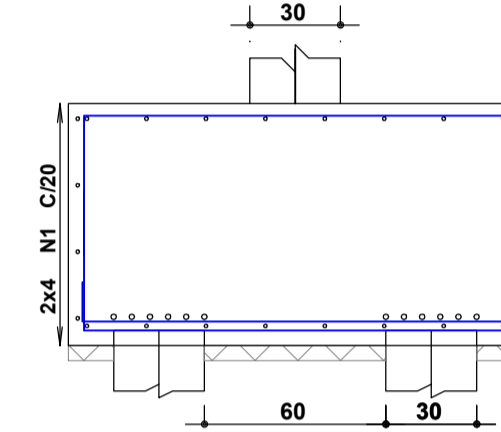
BLOCOS 04 ESTACAS 2X
(ESCALA 1:25)



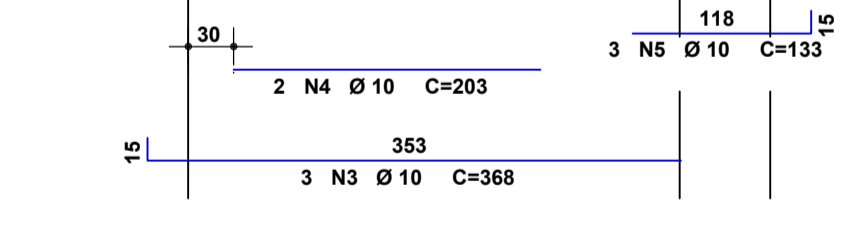
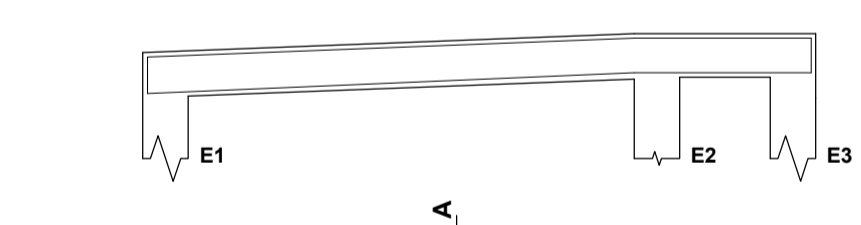
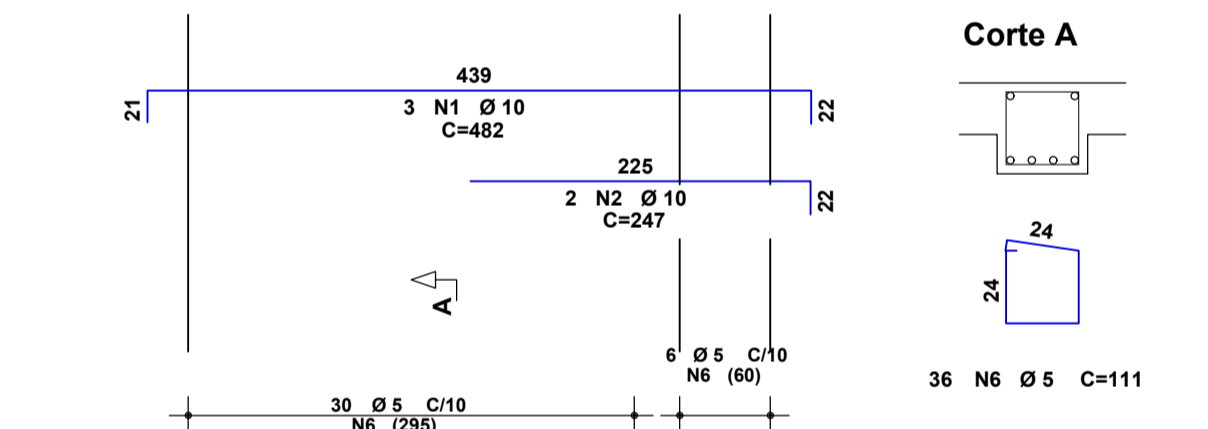
CORTE A - A



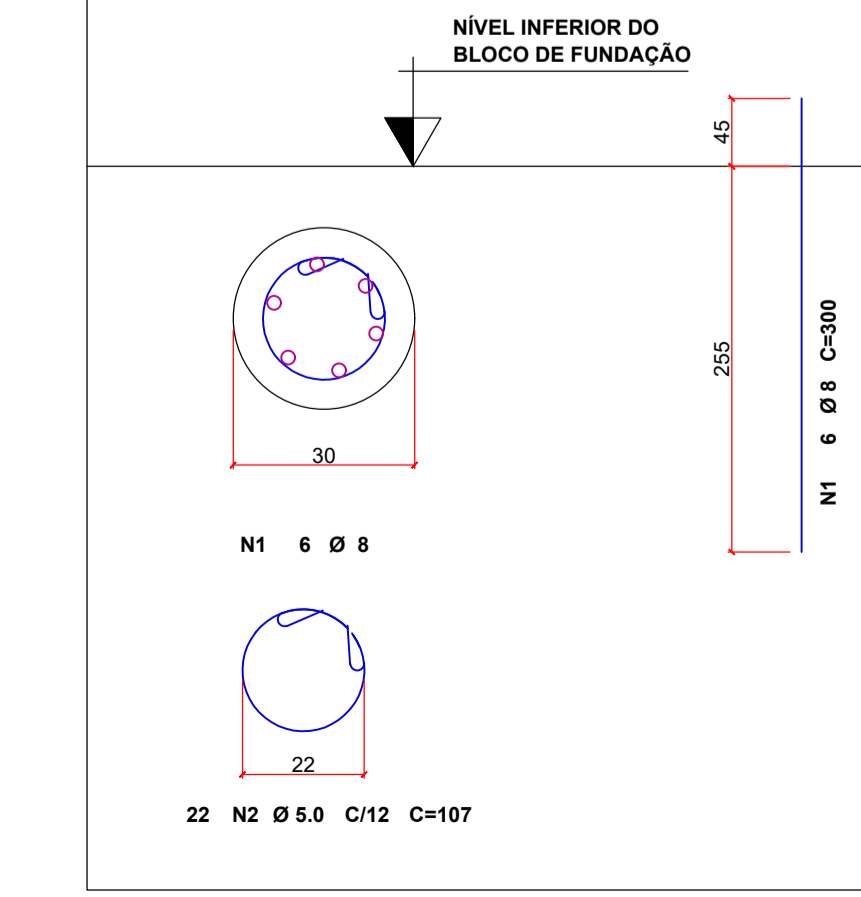
CORTE B - B



V1 30/30



ESTACAS DE Ø 30 CM - x 11



ACO	POS	BIT (mm)	QUANT	COMPRIMENTO UNIT (cm)	TOTAL (cm)	
V1	50A	1	10	3	482	1446
	50A	2	10	2	247	494
	50A	3	10	3	368	1104
	50A	4	10	2	203	406
	50A	5	10	3	133	399
	60B	6	5	36	111	396

ACO	POS	BIT (mm)	QUANT	COMPRIMENTO UNIT (cm)	TOTAL (cm)	
BLOCOS 04 ESTACAS (X2)	50A	1	6.3	16	310	4960
	50A	2	8	24	167	4008
	50A	3	8	32	233	7456
	50A	4	8	32	232	7424

Nivel 170 - Armadura negativa horizontal	ACO	POS	BIT (mm)	QUANT	COMPRIMENTO UNIT (cm)	TOTAL (cm)
	50A	1	12.5	9	316	2835
	50A	2	10	12	270	3240
	50A	3	8	23	137	3151

Nivel 170 - Armadura negativa vertical	ACO	POS	BIT (mm)	QUANT	COMPRIMENTO UNIT (cm)	TOTAL (cm)
	50A	5	8	8	305	2440
	50A	7	8	23	137	3151

Nivel 170 - Armadura positiva horizontal	ACO	POS	BIT (mm)	QUANT	COMPRIMENTO UNIT (cm)	TOTAL (cm)
	50A	2	6.3	12	562	6744
	50A	3	6.3	11	584	6424
	50A	4	6.3	34	115	3910
	50A	5	6.3	11	467	5137

Nivel 170 - Armadura positiva vertical	ACO	POS	BIT (mm)	QUANT	COMPRIMENTO UNIT (cm)	TOTAL (cm)
	50A	4	6.3	8	305	2440
	50A	2	6.3	132	115	15180

PL1	ACO	POS	BIT (mm)	QUANT	COMPRIMENTO UNIT (cm)	TOTAL (cm)
	50A	2	10	12	146	1752
	60B	3	5	13	259	3367
	60B	4	5	52	24	1248

PL2	ACO	POS	BIT (mm)	QUANT	COMPRIMENTO UNIT (cm)	TOTAL (cm)
	50A	1	10	12	152	1824
	50A	2	10	12	80	960
	60B	3	5	16	259	4144
	60B	4	5	64	24	1536

Estacas	ACO	POS	BIT (mm)	QUANT	COMPRIMENTO UNIT (cm)	TOTAL (cm)
	50A	1	8	66	300	19800
	60B	2	5	242	107	25894

RESUMO AÇO CA 50-60			
ACO	BIT (mm)	COMPR (m)	PESO (kg)
60B	5	492	62
50A	6.3	448	110
50A	8	465	184
50A	10	116	72
50A	12.5	28	27
Peso Total	60B =		62 kg
Peso Total	50A =		393 kg

- CARGAS:**
- CARGA LAJE PISO: PERMANENTE: 1500kg/m² - ACIDENTAL: 1500kg/m²
 - CARGA ALVENARIA: 750kg/m
- CARACTERÍSTICAS DO CONCRETO:**
- RESISTÊNCIA CARACTERÍSTICA DO CONCRETO (fck): 25 MPa
 - RELAÇÃO ÁGUA/CEMENTO (a/c): 0.55
 - A DIMENSÃO MÁXIMA CARACTERÍSTICA DO AGREGADO GRAUADO UTILIZADO DEVE SER INFERIOR A 1,6cm;
 - MÓDULO DE ELASTICIDADE LONGITUDINAL SECANTE DESTA PROPOSTA: Ecs = 26,07 GPa
- COBRIMENTOS DAS ARMADURAS, COM RÍGIDO CONTROLE DE QUALIDADE:**
- VIGAS: 3.0 cm
 - PILARES: 3.0 cm
 - LAJES (BACIAÇA E PRÉ-MOLDADA): 2.0 cm
 - FUNDADAÇÃO: 4.0 cm

- LEGENDA**
- PILAR QUE NASCE
 - PILAR QUE CONTINUA
 - PILAR QUE MORRE
 - PILAR QUE MUDA DE SEÇÃO

OR	15/11/2021	EMISSÃO INICIAL	ANTONIO CARLOS PERES
REVISÃO	DATA	DESCRIÇÃO	RESPONSÁVEL

OBRA

CONSTRUÇÃO COMERCIAL

DISCIPLINA

ESTRUTURAL

LOCALIZAÇÃO: AVENIDA JOSÉ VALTER, QUADRA 24, RESIDENCIAL INTERLAGOS MUNICÍPIO: RIO VERDE - GO

DESCRIÇÃO: **ESTRUTURA - RAMPA 2**

AUTOR/RESPONSÁVEL: ANTONIO CARLOS PERES PROPRIETÁRIO: CÂMARA MUNICIPAL DE RIO VERDE REVISÃO: 00

ESCALA: INDICADA EMPRESA: ACM ENGENHARIA PRONCHA: 01/01

ETAPA DO PROJETO: EXECUTIVO CNPJ: 33.471.068/0001-19